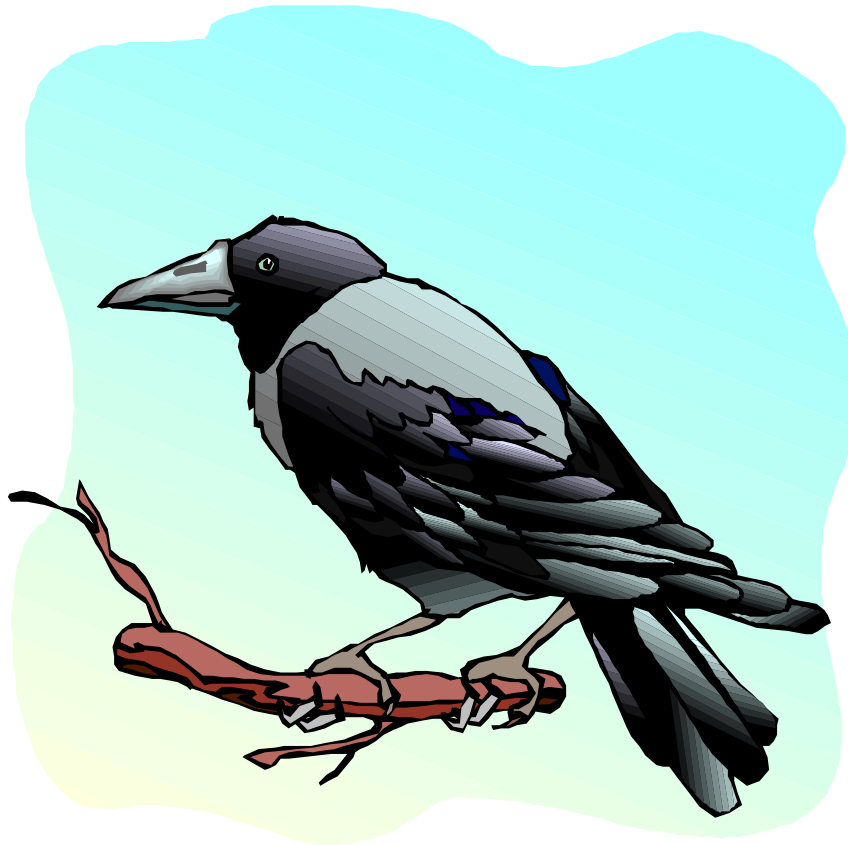


God's Animal Kingdom Classroom

Raven



The raven is an amazing bird. It is extremely intelligent and has demonstrated impressive problem solving skills. It is a strong flier and performs amazing acrobatic maneuvers in flight. The raven is able to survive in a wide range of climates and environments. The raven possesses great courage and will even sneak up and steal food from a feeding eagle.

What can we learn from the raven?

The raven uses its large intellect to solve problems and find the best way to achieve its goals. The raven teaches us to use our God-given intelligence to study and solve life's problems. The Bible is God's handbook for living and we should improve our minds by reading the Bible often.

The raven is strong and graceful in flight. We should try to imitate this in our faith. We should always try to strengthen our faith through Bible reading and prayer. We should always try to be graceful in our dealings with others. We should reflect our Savior in all that we do.

By faith, we are able to survive many different environments just like the raven. We will not always find people supportive of our Christian faith or worse, they may oppose it strongly. We must rely on Jesus to help us to get along with those who oppose us and to try and set a good example of Christian living. Like the raven, we must have courage even in the face of those stronger than ourselves.

The raven will even steal food from an eagle to survive. We should be willing to “steal” people from

the ways of Satan so that they may survive in eternity.

God so loved the raven that He put it in the Bible. Noah sent out a raven to see if the flood waters had dried up anywhere. Noah knew the waters were receding when the raven did not return one day.

Elijah, the prophet, was fed by ravens in the desert by the command of God. Jesus even uses the raven to teach us to trust in God when He says in Luke 12:24, *“Consider the ravens: they do not sow or reap, they have no storeroom or barn; yet God feeds them.”*

