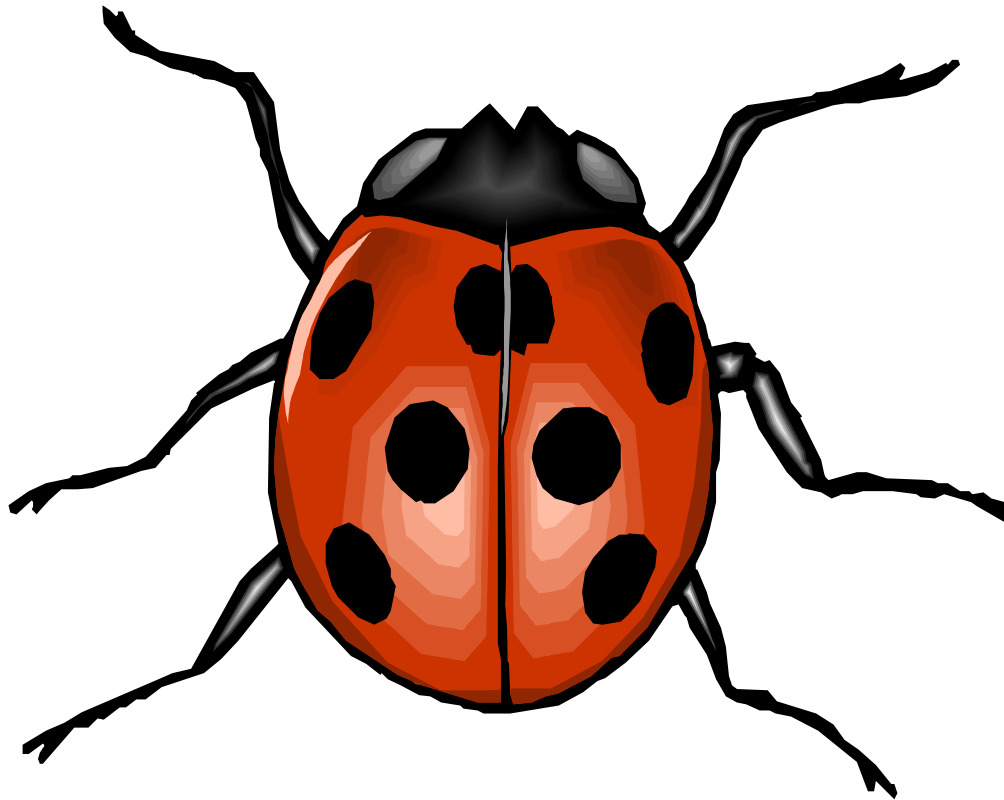


## God's Animal Kingdom Classroom

# *Beetle*



There are more kinds of beetle than any other kind of insect on earth. They come in many shapes, sizes and colors. Some are harmful when they damage crops but most are very helpful as they eat other harmful insects. All beetles have one thing in common. They all have a hard shell to protect them. The shell covers wings that let the beetle fly. The ladybug is a beetle that is common.

The ladybug is a very helpful beetle that eats insects that kill our plants and food crops. It is fun to let a ladybug walk along your hand until it decides to open its shell and fly away.

What can we learn from the beetle?

The beetle teaches us to put on the armor of God and help others. The beetle also teaches us about the resurrection.

The beetle can live in nearly every place on earth thanks to its protective shell and its ability to adapt to its environment. The same is true for those who believe that Jesus is their Savior. With the love and protection of God, we can go anywhere and do God's work of helping others learn about Jesus and how He saved us from our sins. The Bible teaches us in Ephesians 5:10, *"Be strong in the Lord and in his mighty power. Put on the full armor of God so that you can take your stand against the devil's schemes."* God's promises and His holy word are the armor that we have to protect us. When we read our Bibles we learn about this wonderful protection as well as the love of God that gives this gift to us. We should use this gift of love to be brave and tell others about Jesus our Savior. We should not abuse this gift and hurt others by what we say and do.

The beetle also teaches us about the resurrection. Even though the beetle looks heavy and awkward, it can spread its wings and fly heavenward. Our sins weigh us down and crush us. Thanks to the forgiveness of our sins earned by Jesus on the cross, we will one day fly heavenward. We are ugly in our sin but beautiful in our resurrection as we go to heaven to live with Jesus forever.

